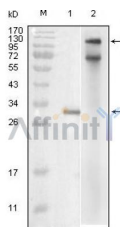


IKBKE Ab

[Images\(1\)](#)

Cat.#: BF0547	Concn.: ~1mg/ml	Mol.Wt.: 80kDa
Size:	Source: Mouse	Clonality: Monoclonal

Application:	ELISA 1:10000, WB 1:500-1:2000 *The optimal dilutions should be determined by the end user.
Reactivity:	Human,Monkey
Storage:	Mouse IgG1 in phosphate buffered saline (without Mg ²⁺ and Ca ²⁺), pH 7.4, 150mM NaCl, 0.02% sodium azide and 50% glycerol. Store at -20 °C. Stable for 12 months from date of receipt.
Purification:	Affinity-chromatography.
Immunogen:	Purified recombinant fragment of human IKBKE expressed in E. Coli.
Uniprot:	Q14164
Description:	Inhibitor of kappa light polypeptide gene enhancer in B-cells, kinase epsilon.The transcription factor NF κ B is retained in the cytoplasm in an inactive form by the inhibitory protein I κ B. Activation of NF κ B requires that I κ B be phosphorylated on specific serine residues, which results in targeted degradation of I κ B. I κ B kinase γ (IKK γ), previously designated CHUK, interacts with I κ B- γ and specifically phosphorylates I κ B- γ on the sites that trigger its degradation, serines 32 and 36. The functional IKK complex contains three subunits, IKK α , IKK β and IKK γ (also designated NEMO), and each appear to make essential contributions to I κ B phosphorylation. IKK-i is a serine/threonine kinase that shares homology with IKK α and IKK β .



Western blot analysis using IKBKE mouse mAb against truncated IKBKE recombinant protein (1) and full-length IKBKE(aa1-716)-hIgGFc transfected COS7 cell lysates (2).

IMPORTANT: For western blot, incubate membrane with diluted primary Ab in 5% w/v milk , 1X TBS, 0.1% Tween@20 at 4°C with gentle shaking, overnight.

For Research Use Only. Not for use in diagnostic and therapeutic procedures. Not for resale without express authorization.