

## SLC9A6 Ab

[Images\(2\)](#)

Cat.#: DF4517	Concn.: ~1mg/ml	Mol.Wt.: 74 KD
Size:	Source: Rabbit	Clonality: Polyclonal

**Application:** WB 1:500-1:1000, IF/ICC 1:100-1:500  
\*The optimal dilutions should be determined by the end user.

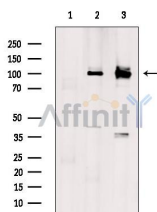
**Reactivity:** Human, Mouse

**Storage:** Rabbit IgG in phosphate buffered saline , pH 7.4, 150mM NaCl, 0.02% sodium azide and 50% glycerol. Store at -20 °C. Stable for 12 months from date of receipt.

**Purification:** The antiserum was purified by peptide affinity chromatography using SulfoLink™ Coupling Resin (Thermo Fisher Scientific).

**Immunogen:** A synthesized peptide derived from human SLC9A6, corresponding to a region within C-terminal amino acids.

**Uniprot:** Q92581



Western blot analysis of extracts from various samples, using SLC9A6 Ab.  
Lane 1: MCF7 cells, blocked with antigen-specific peptides,  
Lane 2: MCF7 cells,  
Lane 3: MDA-MB-231 cells.

**IMPORTANT:** For western blot, incubate membrane with diluted primary Ab in 5% w/v milk , 1X TBS, 0.1% Tween@20 at 4°C with gentle shaking, overnight.

For Research Use Only. Not for use in diagnostic and therapeutic procedures. Not for resale without express authorization.