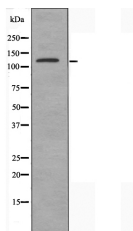


TIE1 Ab

[References\(1\)](#) [Images\(1\)](#)

Cat.#: DF4582	Concn.: ~1mg/ml	Mol.Wt.: 130 KD
Size:	Source: Rabbit	Clonality: Polyclonal
Application:	WB 1:500-1:1000 *The optimal dilutions should be determined by the end user.	
Reactivity:	Human, Mouse, Rat	
Storage:	Rabbit IgG in phosphate buffered saline, pH 7.4, 150mM NaCl, 0.02% sodium azide and 50% glycerol. Store at -20 °C. Stable for 12 months from date of receipt.	
Purification:	The antiserum was purified by peptide affinity chromatography using SulfoLink™ Coupling Resin (Thermo Fisher Scientific).	
Immunogen:	A synthesized peptide derived from human TIE1, corresponding to a region within C-terminal amino acids.	
Uniprot:	P35590	



Western blot analysis of extracts from HepG2 cells using TIE1 Ab.

IMPORTANT: For western blot, incubate membrane with diluted primary Ab in 5% w/v milk, 1X TBS, 0.1% Tween@20 at 4°C with gentle shaking, overnight.

For Research Use Only. Not for use in diagnostic and therapeutic procedures. Not for resale without express authorization.