

## Glucose-6-phosphate isomerase Ab

[Images\(1\)](#)

Cat.#: BF0106	Concn.: ~1mg/ml	Mol.Wt.: 63kDa
Size:	Source: Mouse	Clonality: Monoclonal

Application: ELISA 1:10000, WB 1:500-1:2000, IHC 1:200-1:1000, IF/ICC 1:200-1:1000

\*The optimal dilutions should be determined by the end user.

Reactivity: Human

Storage: Mouse IgG1 in phosphate buffered saline (without Mg<sup>2+</sup> and Ca<sup>2+</sup>), pH 7.4, 150mM NaCl, 0.02% sodium azide and 50% glycerol. Store at -20 °C. Stable for 12 months from date of receipt.

Purification: Affinity-chromatography.

Immunogen: Purified recombinant fragment of human Glucose-6-phosphate isomerase expressed in E. Coli.

Uniprot: P06744

Description: Glucose-6-phosphate isomerase, or phosphoglucose isomerase, also known as GPI. It belongs to the GPI family whose members encode multifunctional phosphoglucose isomerase proteins involved in energy pathways and it is an enzyme that catalyzes the conversion of glucose-6-phosphate into fructose 6-phosphate in the second step of glycolysis. The protein functions in different capacities inside and outside the cell.

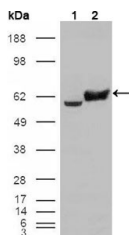


Figure 1: Western blot analysis using GPI mouse mAb against HepG2 (1) , SMMC-7721 (2) cell lysates and rat liver tissues lysates (3).

**IMPORTANT:** For western blot, incubate membrane with diluted primary Ab in 5% w/v milk , 1X TBS, 0.1% Tween@20 at 4°C with gentle shaking, overnight.

For Research Use Only. Not for use in diagnostic and therapeutic procedures. Not for resale without express authorization.