

IGFBP2 Ab

[Images\(1\)](#)

Cat.#: BF0137	Concn.: ~1mg/ml	Mol.Wt.: 35kDa.
Size:	Source: Mouse	Clonality: Monoclonal

Application: ELISA 1:10000, WB 1:500-1:2000, IHC 1:200-1:1000
*The optimal dilutions should be determined by the end user.

Reactivity: Human

Storage: Mouse IgG1 in phosphate buffered saline (without Mg²⁺ and Ca²⁺), pH 7.4, 150mM NaCl, 0.02% sodium azide and 50% glycerol. Store at -20 °C. Stable for 12 months from date of receipt.

Purification: Affinity-chromatography.

Immunogen: Purified recombinant fragment of human IGFBP2 expressed in E. Coli.

Uniprot: P18065

Description: IGFBP2: insulin-like growth factor binding protein 2. IGFBP2 is a member of the ISGBP family which bind various IGFs. IGFBP2 is overexpressed in a wide spectrum of other cancers, including glioma, prostate cancer, synovial sarcoma, neuroblastoma, colon cancer, adrenocortical cancer, lung cancer, Wilms' tumor, and hepatoblastoma. The overexpression of IGFBP2 also correlates with the aggressiveness of some tumors. IGFBP2 activates the expression of matrix metalloprotease 2, which contributes to cell invasiveness.

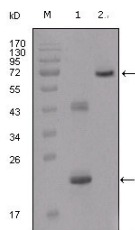


Figure 1: Western blot analysis using IGFBP2 mouse mAb against truncated IGFBP2-His recombinant protein (1) and truncated IGFBP2 (aa40-328)-hIGF_c transfected CHO-K1 cell lysates (2).

IMPORTANT: For western blot, incubate membrane with diluted primary Ab in 5% w/v milk, 1X TBS, 0.1% Tween@20 at 4°C with gentle shaking, overnight.

For Research Use Only. Not for use in diagnostic and therapeutic procedures. Not for resale without express authorization.