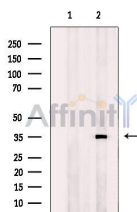


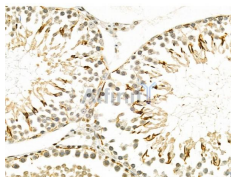
## OSR2 Ab

[Images\(9\)](#)

|               |   |                       |
|---------------|---|-----------------------|
| Cat.#: DF4670 | Concn.: ~1mg/ml   | Mol.Wt.: 36 KD        |
| Size:         | Source: Rabbit  | Clonality: Polyclonal |
| Application:  | WB 1:500-1:1000, IF/ICC 1:100-1:500, IHC 1:50-1:200<br>*The optimal dilutions should be determined by the end user.   |                       |
| Reactivity:   | Human, Mouse, Rat   |                       |
| Storage:      | Rabbit IgG in phosphate buffered saline, pH 7.4, 150mM NaCl, 0.02% sodium azide and 50% glycerol. Store at -20 °C. Stable for 12 months from date of receipt. |                       |
| Purification: | The antiserum was purified by peptide affinity chromatography using SulfoLink™ Coupling Resin (Thermo Fisher Scientific).                                     |                       |
| Immunogen:    | A synthesized peptide derived from human OSR2, corresponding to a region within the internal amino acids.   |                       |
| Uniprot:      | Q8N2R0  |                       |



Western blot analysis of extracts from Jurkat cells, using OSR2 Ab. The lane on the left was treated with blocking peptide.



DF4670 at 1/100 staining Rat testis tissue by IHC-P. The sample was formaldehyde fixed and a heat mediated antigen retrieval step in citrate buffer was performed. The sample was then blocked and incubated with the primary Ab at 4°C overnight. An HRP conjugated anti-Rabbit Ab was used as the secondary Ab.

**IMPORTANT:** For western blot, incubate membrane with diluted primary Ab in 5% w/v milk, 1X TBS, 0.1% Tween@20 at 4°C with gentle shaking, overnight.

For Research Use Only. Not for use in diagnostic and therapeutic procedures. Not for resale without express authorization.