

## Alkaline Phosphatase Ab

[References\(2\)](#) [Images\(2\)](#)

Cat.#: DF4722                      Concn.: ~1mg/ml                      Mol.Wt.: 57 KD  
Size:                                      Source: Rabbit                      Clonality: Polyclonal

Application:                      WB 1:500-1:1000, IF/ICC 1:100-1:500, IHC 1:50-1:200  
\*The optimal dilutions should be determined by the end user.

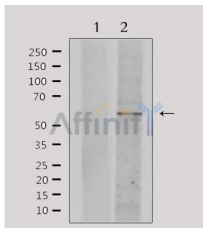
Reactivity:                      Human,Mouse,Rat

Storage:                      Rabbit IgG in phosphate buffered saline , pH 7.4, 150mM NaCl, 0.02% sodium azide and 50% glycerol. Store at -20 °C. Stable for 12 months from date of receipt.

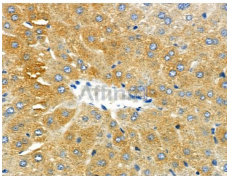
Purification:                      The antiserum was purified by peptide affinity chromatography using SulfoLink™ Coupling Resin (Thermo Fisher Scientific).

Immunogen:                      A synthesized peptide derived from human ALPL, corresponding to a region within the internal amino acids.

Uniprot:                      P05186



Western blot analysis of extracts from Hela, using ALPL Ab. Lane 1 was treated with the antigen-specific peptide.



DF4722 at 1/100 staining Mouse liver tissue by IHC-P. The sample was formaldehyde fixed and a heat mediated antigen retrieval step in citrate buffer was performed. The sample was then blocked and incubated with the primary Ab at 4°C overnight. An HRP conjugated anti-Rabbit Ab was used as the secondary Ab.

**IMPORTANT:** For western blot, incubate membrane with diluted primary Ab in 5% w/v milk , 1X TBS, 0.1% Tween@20 at 4°C with gentle shaking, overnight.

For Research Use Only. Not for use in diagnostic and therapeutic procedures. Not for resale without express authorization.