

MAP4K4 Ab

[Images\(1\)](#)

Cat.#: BF0356	Concn.: ~1mg/ml	Mol.Wt.: 142kDa
Size:	Source: Mouse	Clonality: Monoclonal

Application: ELISA 1:10000, WB 1:500-1:2000
*The optimal dilutions should be determined by the end user.

Reactivity: Human

Storage: Mouse IgG1 in phosphate buffered saline (without Mg²⁺ and Ca²⁺), pH 7.4, 150mM NaCl, 0.02% sodium azide and 50% glycerol. Store at -20 °C. Stable for 12 months from date of receipt.

Purification: Affinity-chromatography.

Immunogen: Purified recombinant fragment of human MAP4K4 expressed in E. Coli.

Uniprot: O95819

Description: a Ser/Thr kinase of the STE20 subfamily. May play a role in the response to environmental stress and cytokines such as TNF-alpha. May interact with the SH3 domain of the adapter proteins Nck. Binds, via its CNH regulatory domain, to the N- terminal region of SPG3A. Upregulated in primary tumors and tumor cell lines. Required for anchorage-independent growth and ras-dependent focus formation in multiple cell lines. 5 isoforms of the human protein are produced by alternative splicing.

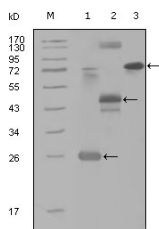


Figure 1: Western blot analysis using MAP4K4 mouse mAb against truncated Trx-MAP4K4 recombinant protein (1), MBP-MAP4K4 (aa300-400) recombinant protein (2) and MAP4K4(aa194-436)-hIgGfC transfected CHO-K1 cell lysate(3).

IMPORTANT: For western blot, incubate membrane with diluted primary Ab in 5% w/v milk , 1X TBS, 0.1% Tween@20 at 4°C with gentle shaking, overnight.

For Research Use Only. Not for use in diagnostic and therapeutic procedures. Not for resale without express authorization.