

## EPHB1 Ab

[Images\(2\)](#)

Cat.#: DF4780                      Concn.: ~1mg/ml                      Mol.Wt.: 120 KD  
Size:                                      Source: Rabbit                              Clonality: Polyclonal

Application:                      IF/ICC 1:100-1:500, WB 1:500-1:1000  
   \*The optimal dilutions should be determined by the end user.

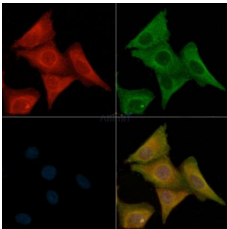
Reactivity:                      Human,Mouse,Rat,Monkey

Storage:                              Rabbit IgG in phosphate buffered saline , pH 7.4, 150mM NaCl, 0.02% sodium azide and 50% glycerol. Store at -20 °C. Stable for 12 months from date of receipt.

Purification:                      The antiserum was purified by peptide affinity chromatography using SulfoLink™ Coupling Resin (Thermo Fisher Scientific).

Immunogen:                      A synthesized peptide derived from human EPHB1, corresponding to a region within the internal amino acids.

Uniprot:                              P54762



DF4780 staining A549 cells(H<sub>2</sub>O<sub>2</sub> treatment) by IF/ICC. The samples were fixed with PFA and permeabilized in 0.1% Triton X-100, then blocked in 10% serum for 45 minutes at 25°C. Samples were then incubated with primary Ab(#DF4780) and mouse anti-beta tubulin Ab(#T0023) for 1 hour at 37°C. An AlexaFluor594 conjugated goat anti-rabbit IgG Ab(Red) and an AlexaFluor488 conjugated goat anti-mouse IgG Ab(Green) were used as the secondary Ab. The nuclear counter stain is DAPI (blue).

**IMPORTANT:** For western blot, incubate membrane with diluted primary Ab in 5% w/v milk , 1X TBS, 0.1% Tween@20 at 4°C with gentle shaking, overnight.

For Research Use Only. Not for use in diagnostic and therapeutic procedures. Not for resale without express authorization.