

## PEG10 Ab

[Images\(1\)](#)

Cat.#: BF0134	Concn.: ~1mg/ml	Mol.Wt.: 80kDa
Size:	Source: Mouse	Clonality: Monoclonal
Application:	ELISA 1:10000, WB 1:500-1:2000, IHC 1:200-1:1000, IF/ICC 1:200-1:1000 *The optimal dilutions should be determined by the end user.	
Reactivity:	Human	
Storage:	Mouse IgG1 in phosphate buffered saline (without Mg <sup>2+</sup> and Ca <sup>2+</sup> ), pH 7.4, 150mM NaCl, 0.02% sodium azide and 50% glycerol. Store at -20 °C. Stable for 12 months from date of receipt.	
Purification:	Affinity-chromatography.	
Immunogen:	Purified recombinant fragment of human PEG10 expressed in E. Coli.	
Uniprot:	Q86TG7	
Description:	PEG10: paternally expressed 10. This gene includes two overlapping reading frames of the same transcript encoding distinct isoforms. The shorter isoform has a CCHC-type zinc finger motif containing a sequence characteristic of gag proteins of most retroviruses and some retrotransposons, and it functions in part by interacting with members of the TGF-beta receptor family. The longer isoform has the active-site DSG consensus sequence of the protease domain of pol proteins. The longer isoform is the result of -1 translational frameshifting that is also seen in some retroviruses. Expression of these two isoforms only comes from the paternal allele due to imprinting. Increased gene expression (as observed by an increase in mRNA levels) is associated with hepatocellular carcinomas.	

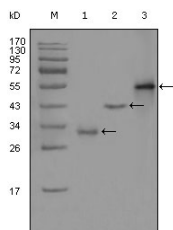


Figure 1: Western blot analysis using PEG10 mouse mAb against truncated Trx-PEG10 recombinant protein (1), truncated GST-PEG10 (aa1-120) recombinant protein (2) and full-length PEG10 (aa1-325)-hIgGfC transfected CHO-K1 cell lysates (3).

**IMPORTANT:** For western blot, incubate membrane with diluted primary Ab in 5% w/v milk, 1X TBS, 0.1% Tween@20 at 4°C with gentle shaking, overnight.