

OR9Q2 Ab

[Images\(3\)](#)

| | | |
|---------------|-----------------|-----------------------|
| Cat.#: DF5135 | Concn.: ~1mg/ml | Mol.Wt.: 38 KD |
| Size: | Source: Rabbit | Clonality: Polyclonal |

Application: WB 1:500-1:1000, IF/ICC 1:100-1:500

*The optimal dilutions should be determined by the end user.

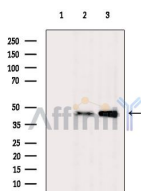
Reactivity: Human

Storage: Rabbit IgG in phosphate buffered saline , pH 7.4, 150mM NaCl, 0.02% sodium azide and 50% glycerol. Store at -20 °C. Stable for 12 months from date of receipt.

Purification: The antiserum was purified by peptide affinity chromatography using SulfoLink™ Coupling Resin (Thermo Fisher Scientific).

Immunogen: A synthesized peptide derived from human OR9Q2, corresponding to a region within C-terminal amino acids.

Uniprot: Q8NGE9

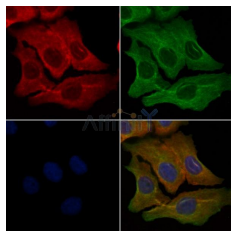


Western blot analysis of extracts from various samples, using OR9Q2 Ab.

Lane 1: Hepg2 cells(heat-shock treatment), blocked with antigen-specific peptides.

Lane 2: Hepg2 cells(heat-shock treatment).

Lane 3: Hela cells(heat-shock treatment).



DF5135 staining Hela cells by IF/ICC. The samples were fixed with PFA and permeabilized in 0.1% Triton X-100, then blocked in 10% serum for 45 minutes at 25°C. Samples were then incubated with primary Ab(DF5135) and mouse anti-beta tubulin Ab(T0023) for 1 hour at 37°C. An AlexaFluor594 conjugated goat anti-rabbit IgG(H+L) Ab(Red) and an AlexaFluor488 conjugated goat anti-mouse IgG(H+L) Ab(Green) were used as the secondary Ab.

The nuclear counter stain is DAPI (blue).

IMPORTANT: For western blot, incubate membrane with diluted primary Ab in 5% w/v milk , 1X TBS, 0.1% Tween@20 at 4°C with gentle shaking, overnight.

For Research Use Only. Not for use in diagnostic and therapeutic procedures. Not for resale without express authorization.