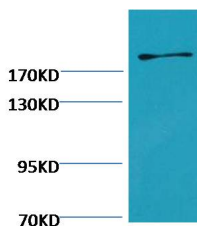


Fibronectin Mouse mAb

[Images\(1\)](#)

Cat.#: BF9010	Concn.: ~1mg/ml	Mol.Wt.: 285KD
Size:	Source: Mouse	Clonality: Monoclonal

Application:	WB 1:1000, IHC 1:50-1:200 *The optimal dilutions should be determined by the end user.
Reactivity:	Human
Storage:	1mg/ml in PBS, pH 7.4, containing 0.02% sodium azide and 50% glycerol. Store at -20 °C. Stable for 12 months from date of receipt.
Purification:	affinity purification.
Immunogen:	Mouse monoclonal antibody is prepared by immunizing synthetic peptide coupled to KLH.
Uniprot:	P02751
Description:	Fibronectin is a high-molecular weight glycoprotein of the extracellular matrix that binds to membrane-spanning receptor proteins called integrins. Similar to integrins, fibronectin binds extracellular matrix components such as collagen. Fibronectin exists as a protein dimer, consisting of two nearly identical monomers linked by a pair of disulfide bonds. The fibronectin protein is produced from a single gene, but alternative splicing of its pre-mRNA leads to the creation of several isoforms



Western blot analysis using Fibronectin Mouse mAb.

IMPORTANT: For western blot, incubate membrane with diluted primary Ab in 5% w/v milk , 1X TBS, 0.1% Tween@20 at 4°C with gentle shaking, overnight.

For Research Use Only. Not for use in diagnostic and therapeutic procedures. Not for resale without express authorization.