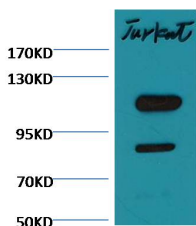


Cleaved-PARP Ab

[References\(4\)](#) [Images\(4\)](#)

Cat.#: BF9106	Concn.: ~1mg/ml	Mol.Wt.: 86kD/116kD
Size:	Source: Mouse	Clonality: Monoclonal
Application:	WB 1:1000-1:5000 *The optimal dilutions should be determined by the end user.	
Reactivity:	Human	
Storage:	1mg/ml in PBS, pH 7.4, containing 0.02% sodium azide and 50% glycerol. Store at -20 °C. Stable for 12 months from date of receipt.	
Purification:	affinity purification.	
Immunogen:	A Mouse Mixture monoclonal antibody is prepared by immunizing recombinant protein.	
Uniprot:	P09874	
Description:	Poly [ADP-ribose] polymerase 1 (PARP-1) also known as NAD ⁺ ADP-ribosyltransferase 1 or poly[ADP-ribose] synthase 1 is an enzyme that in humans is encoded by the PARP1 gene. PARP1 has a role in repair of single-stranded DNA (ssDNA) breaks. Knocking down intracellular PARP1 levels with siRNA or inhibiting PARP1 activity with small molecules reduces repair of ssDNA breaks. In the absence of PARP1, when these breaks are encountered during DNA replication, the replication fork stalls, and double-strand DNA (dsDNA) breaks accumulate.	



Western blot analysis of Cleaved-PARP Ab expression in Jurkat cells lysates.

IMPORTANT: For western blot, incubate membrane with diluted primary Ab in 5% w/v milk, 1X TBS, 0.1% Tween@20 at 4°C with gentle shaking, overnight.

For Research Use Only. Not for use in diagnostic and therapeutic procedures. Not for resale without express authorization.