

DKK1 Ab

[Images\(1\)](#)

| | | |
|---------------|-----------------|-----------------------|
| Cat.#: BF0699 | Concn.: ~1mg/ml | Mol.Wt.: 28.7kDa |
| Size: | Source: Mouse | Clonality: Monoclonal |

| | |
|---------------|--|
| Application: | ELISA 1:10000, WB 1:500-1:2000 *The optimal dilutions should be determined by the end user. |
| Reactivity: | Human |
| Storage: | Mouse IgG1 in phosphate buffered saline (without Mg ²⁺ and Ca ²⁺), pH 7.4, 150mM NaCl, 0.02% sodium azide and 50% glycerol. Store at -20 °C. Stable for 12 months from date of receipt. |
| Purification: | Affinity-chromatography. |
| Immunogen: | Purified recombinant fragment of human DKK1 expressed in E. Coli. |
| Uniprot: | O94907 |
| Description: | DKK1: dickkopf homolog 1 (Xenopus laevis), also known as SK. Entrez Protein NP_036374. DKK1 is a member of the dickkopf family. It is a secreted protein with two cysteine rich regions and is involved in embryonic development through its inhibition of the WNT signaling pathway. Elevated levels of DKK1 in bone marrow plasma and peripheral blood is associated with the presence of osteolytic bone lesions in patients with multiple myeloma. |

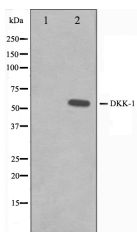


Figure 1: Western blot analysis using DKK1 mouse mAb against HEK293 (1) and DKK1-hlgGfC transfected HEK293 cell lysates (2).

IMPORTANT: For western blot, incubate membrane with diluted primary Ab in 5% w/v milk , 1X TBS, 0.1% Tween@20 at 4°C with gentle shaking, overnight.

For Research Use Only. Not for use in diagnostic and therapeutic procedures. Not for resale without express authorization.