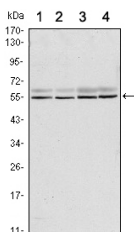


SMAD6 Ab

[Images\(1\)](#)

Cat.#: BF1004	Concn.: ~1mg/ml	Mol.Wt.: 53kDa
Size:	Source: Mouse	Clonality: Monoclonal

Application:	WB 1:1000 *The optimal dilutions should be determined by the end user.
Reactivity:	Human
Storage:	Ascitic fluid containing 0.03% sodium azide. Store at -20 °C. Stable for 12 months from date of receipt.
Purification:	affinity purification.
Immunogen:	Purified recombinant fragment of human SMAD6 expressed in E. Coli.
Uniprot:	O43541
Description:	Antagonist of signaling by TGF-beta (transforming growth factor) type 1 receptor superfamily members; has been shown to inhibit selectively BMP (bone morphogenetic proteins) signaling by competing with the co-SMAD SMAD4 for receptor-activated SMAD1. SMAD6 is an inhibitory SMAD (I-SMAD) or antagonistic SMAD. Binds to regulatory elements in target promoter regions. Tissue specificity: Ubiquitous in various organs, with higher levels in lung. Isoform B is up-regulated in diseased heart tissue.



Western blot analysis using SMAD6 mouse mAb against A431 (1), A431 (2), HeLa (3) and Jurkat (4) cell lysate.

IMPORTANT: For western blot, incubate membrane with diluted primary Ab in 5% w/v milk, 1X TBS, 0.1% Tween@20 at 4°C with gentle shaking, overnight.

For Research Use Only. Not for use in diagnostic and therapeutic procedures. Not for resale without express authorization.