

## HA-Tag Rabbit pAb

[References\(13\)](#) [Images\(5\)](#)

Cat.#: T0050  
Size:

Concn.: ~1mg/ml  
Source: Rabbit

Mol.Wt.:  
Clonality: Polyclonal

Application:

WB 1:3000-1:10000, IP 1:200, CoIP 1:200

\*The optimal dilutions should be determined by the end user.

Reactivity:

All

Storage:

1mg/ml in PBS, pH 7.4, containing 0.02% sodium azide and glycerol. Store at -20 °C. Stable for 12 months from date of receipt.

Purification:

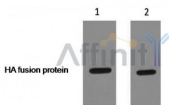
The antiserum was purified by peptide affinity chromatography using SulfoLink™ Coupling Resin (Thermo Fisher Scientific).

Immunogen:

Rabbit polyclonal antibody is prepared by immunizing synthetic peptide coupled to KLH.

Description:

Human influenza hemagglutinin (HA) is a surface glycoprotein required for the infectivity of the human virus. The HA tag is derived from the HA-molecule corresponding to amino acids 98-106 has been extensively used as a general epitope tag in expression vectors. Many recombinant proteins have been engineered to express the HA tag, which does not appear to interfere with the bioactivity or the biodistribution of the recombinant protein. HA tag antibody is a highly sensitive and affinity monoclonal antibody applicable to HA-tagged fusion protein detection.



Western blot analysis of HA-Tag Rabbit pAb expression in HA fusion protein sample

**IMPORTANT:** For western blot, incubate membrane with diluted primary Ab in 5% w/v milk , 1X TBS, 0.1% Tween@20 at 4°C with gentle shaking, overnight.

For Research Use Only. Not for use in diagnostic and therapeutic procedures. Not for resale without express authorization.