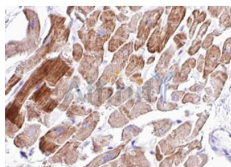


VEGFR3 Ab

[Images\(2\)](#)

Cat.#: AF4201	Concn.: ~1mg/ml	Mol.Wt.: 160kd
Size:	Source: Rabbit	Clonality: Polyclonal
Application:	WB 1:500-1:1000, IHC 1:50-1:200, IF/ICC 1:200 *The optimal dilutions should be determined by the end user.	
Reactivity:	Human,Mouse	
Storage:	Supplied at 1.0mg/mL in phosphate buffered saline (without Mg ²⁺ and Ca ²⁺), pH 7.4, 150mM NaCl and glycerol. Store at -20 °C. Stable for 12 months from date of receipt.	
Purification:	The antiserum was purified by peptide affinity chromatography using SulfoLink™ Coupling Resin (Thermo Fisher Scientific).	
Immunogen:	A synthesized peptide derived from human VEGFR3, corresponding to a region within C-terminal amino acids.	
Uniprot:	P35916	
Description:	Tyrosine-protein kinase that acts as a cell-surface receptor for VEGFC and VEGFD, and plays an essential role in adult lymphangiogenesis and in the development of the vascular network and the cardiovascular system during embryonic development. Promotes proliferation, survival and migration of endothelial cells, and regulates angiogenic sprouting. Signaling by activated FLT4 leads to enhanced production of VEGFC	



AF4201 at 1/100 staining human Heart muscle sections by IHC-P. The tissue was formaldehyde fixed and a heat mediated antigen retrieval step in citrate buffer was performed. The tissue was then blocked and incubated with the Ab for 1.5 hours at 22°C. An HRP conjugated goat anti-rabbit Ab was used as the secondary Ab.

IMPORTANT: For western blot, incubate membrane with diluted primary Ab in 5% w/v milk , 1X TBS, 0.1% Tween@20 at 4°C with gentle shaking, overnight.

For Research Use Only. Not for use in diagnostic and therapeutic procedures. Not for resale without express authorization.