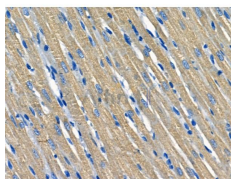


SOD2/MnSOD Ab

[References\(19\)](#) [Images\(12\)](#)

| | | |
|---------------|--|-----------------------|
| Cat.#: AF5144 | Concn.: ~1mg/ml | Mol.Wt.: 25 kDa |
| Size: | Source: Rabbit | Clonality: Polyclonal |
| Application: | WB 1:500-1:2000, IHC 1:50-1:200 *The optimal dilutions should be determined by the end user. | |
| Reactivity: | Human,Mouse,Rat | |
| Storage: | Rabbit IgG in phosphate buffered saline , pH 7.4, 150mM NaCl, 0.02% sodium azide and 50% glycerol. Store at -20 °C. Stable for 12 months from date of receipt. | |
| Purification: | The antiserum was purified by peptide affinity chromatography using SulfoLink™ Coupling Resin (Thermo Fisher Scientific). | |
| Immunogen: | A synthesized peptide derived from human SOD2/MnSOD, corresponding to a region within the internal amino acids. | |
| Uniprot: | P04179 | |
| Description: | Mn SOD antibody Mn superoxide dismutase antibody MNSOD antibody MVCD6 antibody SOD 2 antibody SOD2 antibody SODM_HUMAN antibody | |



AF5144 at 1/100 staining Mouse skin tissue by IHC-P. The sample was formaldehyde fixed and a heat mediated antigen retrieval step in citrate buffer was performed. The sample was then blocked and incubated with the primary Ab at 4°C overnight. An HRP conjugated anti-Rabbit Ab was used as the secondary Ab.

IMPORTANT: For western blot, incubate membrane with diluted primary Ab in 5% w/v milk , 1X TBS, 0.1% Tween@20 at 4°C with gentle shaking, overnight.

For Research Use Only. Not for use in diagnostic and therapeutic procedures. Not for resale without express authorization.