

SMAD6 Ab

[References\(2\)](#) [Images\(2\)](#)

Cat.#: AF5160	Concn.: ~1mg/ml	Mol.Wt.: 50~65kD
Size:	Source: Rabbit	Clonality: Polyclonal

Application: WB 1:500-1:2000, IHC 1:50-1:200
*The optimal dilutions should be determined by the end user.

Reactivity: Human,Mouse

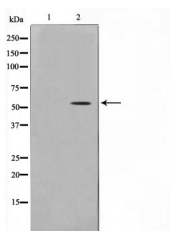
Storage: Rabbit IgG in phosphate buffered saline , pH 7.4, 150mM NaCl, 0.02% sodium azide and 50% glycerol. Store at -20 °C. Stable for 12 months from date of receipt.

Purification: The antiserum was purified by peptide affinity chromatography using SulfoLink™ Coupling Resin (Thermo Fisher Scientific).

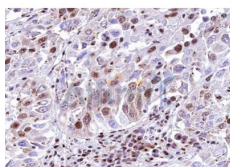
Immunogen: A synthesized peptide derived from human SMAD6, corresponding to a region within the internal amino acids.

Uniprot: O43541

Description: Acts as a mediator of TGF-beta and BMP antiinflammatory activity. Suppresses IL1R-TLR signaling through its direct interaction with PEL1, preventing NF-kappa-B activation, nuclear transport and NF-kappa-B-mediated expression of proinflammatory genes. May block the BMP-SMAD1 signaling pathway by competing with SMAD4 for receptor-activated SMAD1-binding. Binds to regulatory elements in target promoter regions



Western blot analysis of Smad 6 expression in mouse brain, The lane on the left was treated with the antigen-specific peptide.



AF5160 at 1/100 staining human lung tissue sections by IHC-P. The tissue was formaldehyde fixed and a heat mediated antigen retrieval step in citrate buffer was performed. The tissue was then blocked and incubated with the Ab for 1.5 hours at 22°C. An HRP conjugated goat anti-rabbit Ab was used as the secondary Ab.

IMPORTANT: For western blot, incubate membrane with diluted primary Ab in 5% w/v milk , 1X TBS, 0.1% Tween@20 at 4°C with gentle shaking, overnight.

For Research Use Only. Not for use in diagnostic and therapeutic procedures. Not for resale without express authorization.