

## MYL3 Ab

[Images\(1\)](#)

Cat.#: BF0384	Concn.: ~1mg/ml	Mol.Wt.: 22kDa
Size:	Source: Mouse	Clonality: Monoclonal

Application: ELISA 1:10000, WB 1:500-1:2000, IHC 1:200-1:1000  
\*The optimal dilutions should be determined by the end user.

Reactivity: Human

Storage: Mouse IgG1 in phosphate buffered saline (without Mg<sup>2+</sup> and Ca<sup>2+</sup>), pH 7.4, 150mM NaCl, 0.02% sodium azide and 50% glycerol. Store at -20 °C. Stable for 12 months from date of receipt.

Purification: Affinity-chromatography.

Immunogen: Purified recombinant fragment of human MYL3 expressed in E. Coli.

Uniprot: P08590

Description: Myosins are a large superfamily of motor proteins that move along actin filaments, while hydrolyzing ATP. Myosin is the major component of thick muscle filaments, and is a long asymmetric molecule containing a globular head and a long tail. The molecule consists of two heavy chains and four light chains. Activation of smooth and cardiac muscle primarily involves pathways which increase calcium and myosin phosphorylation resulting in contraction. Myosin light chain phosphatase acts to regulate muscle contraction by dephosphorylating activated myosin light chain. MYL3 encodes myosin light chain 3, an alkali light chain also referred to in the literature as both the ventricular isoform and the slow skeletal muscle isoform.

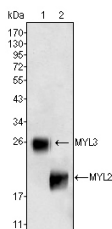


Figure 1: Western blot analysis using MYL3 (1) and MYL2 (2) mouse mAb against rat fetal heart tissues lysate.

**IMPORTANT:** For western blot, incubate membrane with diluted primary Ab in 5% w/v milk, 1X TBS, 0.1% Tween@20 at 4°C with gentle shaking, overnight.

For Research Use Only. Not for use in diagnostic and therapeutic procedures. Not for resale without express authorization.