

ISL1 Ab

[Images\(1\)](#)

Cat.#: BF0164	Concn.: ~1mg/ml	Mol.Wt.: 39kDa
Size:	Source: Mouse	Clonality: Monoclonal

Application: ELISA 1:10000, WB 1:500-1:2000, IHC 1:200-1:1000, IF/ICC 1:200-1:1000

*The optimal dilutions should be determined by the end user.

Reactivity: Human

Storage: Mouse IgG1 in phosphate buffered saline (without Mg²⁺ and Ca²⁺), pH 7.4, 150mM NaCl, 0.02% sodium azide and 50% glycerol. Store at -20 °C. Stable for 12 months from date of receipt.

Purification: Affinity-chromatography.

Immunogen: Purified recombinant fragment of human ISL1 expressed in E. Coli.

Uniprot: P61371

Description: ISL1 (ISL1 transcription factor, LIM/homeodomain) is a member of the LIM/homeodomain family of transcription factors. It binds to the enhancer region of the insulin gene, among others, and may play an important role in regulating insulin gene expression. It is central to the development of pancreatic cell lineages and may also be required for motor neuron generation. Islet-1 expression defines cardiac progenitor cell populations and is required for normal cardiac development and asymmetry. Mutations in this gene have been associated with maturity-onset diabetes of the young.

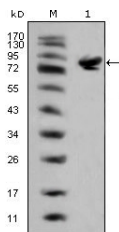


Figure 1: Western blot analysis using ISL1 mouse mAb against full-length ISL1 (aa1-349)-hIgGFc transfected HEK293 cell lysate(1).

IMPORTANT: For western blot, incubate membrane with diluted primary Ab in 5% w/v milk, 1X TBS, 0.1% Tween@20 at 4°C with gentle shaking, overnight.

For Research Use Only. Not for use in diagnostic and therapeutic procedures. Not for resale without express authorization.