

CD18 Ab

[Images\(1\)](#)

Cat.#: BF0227	Concn.: ~1mg/ml	Mol.Wt.: 85kDa
Size:	Source: Mouse	Clonality: Monoclonal

Application:	ELISA 1:10000, IF/ICC 1:200-1:1000 *The optimal dilutions should be determined by the end user.
Reactivity:	Human,Mouse
Storage:	Mouse IgG1 in phosphate buffered saline (without Mg ²⁺ and Ca ²⁺), pH 7.4, 150mM NaCl, 0.02% sodium azide and 50% glycerol. Store at -20 °C. Stable for 12 months from date of receipt.
Purification:	Affinity-chromatography.
Immunogen:	Purified recombinant fragment of human CD18 expressed in E. Coli.
Uniprot:	P05107
Description:	CD18, also known as ITGB2 (integrin beta chain beta 2). Integrins are integral cell-surface proteins composed of an alpha chain and a beta chain. A given chain may combine with multiple partners resulting in different integrins. For example, beta 2 combines with the alpha L chain to form the integrin LFA-1, and combines with the alpha M chain to form the integrin Mac-1. Integrins are known to participate in cell adhesion as well as cell-surface mediated signalling. CD18 is expressed by most leucocytes. Defects in this gene are the cause of leukocyte adhesion deficiency type I (LAD1). Two transcript variants encoding the same protein have been identified for this gene.

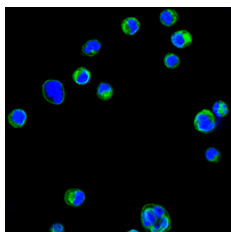


Figure 1: Confocal immunofluorescence analysis of HL60 cells using CD18 mouse mAb (green). Blue: DRAQ5 fluorescent DNA dye.

For Research Use Only. Not for use in diagnostic and therapeutic procedures. Not for resale without express authorization.