

SOD1 Ab

[References\(21\)](#) [Images\(18\)](#)

Cat.#: AF5198
Size:

Concn.: ~1mg/ml
Source: Rabbit

Mol.Wt.: 20kD
Clonality: Polyclonal

Application:

WB 1:500-1:2000, IHC 1:50-1:200
*The optimal dilutions should be determined by the end user.

Reactivity:

Human, Mouse, Rat, Pig

Storage:

Rabbit IgG in phosphate buffered saline, pH 7.4, 150mM NaCl, 0.02% sodium azide and 50% glycerol. Store at -20 °C. Stable for 12 months from date of receipt.

Purification:

The antiserum was purified by peptide affinity chromatography using SulfoLink™ Coupling Resin (Thermo Fisher Scientific).

Immunogen:

A synthesized peptide derived from human SOD1, corresponding to a region within the internal amino acids.

Uniprot:

P00441

Description:

Destroys radicals which are normally produced within the cells and which are toxic to biological systems.



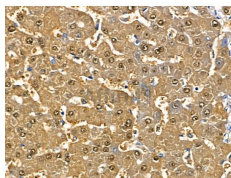
Western blot analysis of extracts from various samples, using SOD1 Ab.

Lane 1: Rat liver, blocked with antigen-specific peptides.

Lane 2: Rat liver.

Lane 3: Mouse brain.

Lane 4: Hepg2 cells (heat-shock treatment).



AF5198 at 1/100 staining Human liver cancer and adjacent normal tissues by IHC-P. The sample was formaldehyde fixed and a heat mediated antigen retrieval step in citrate buffer was performed. The sample was then blocked and incubated with the primary Ab at 4°C overnight. An HRP conjugated anti-Rabbit Ab was used as the secondary Ab.

IMPORTANT: For western blot, incubate membrane with diluted primary Ab in 5% w/v milk, 1X TBS, 0.1% Tween@20 at 4°C with gentle shaking, overnight.

procedures. Not for resale without express authorization.