

## PRLHR Ab

[Images\(1\)](#)

Cat.#: AF5212	Concn.: ~1mg/ml	Mol.Wt.: 41 kDa
Size:	Source: Rabbit	Clonality: Polyclonal

**Application:** WB 1:500-1:2000, IF/ICC 1:100-1:500  
\*The optimal dilutions should be determined by the end user.

**Reactivity:** Human, Mouse, Rat

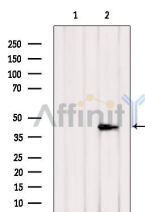
**Storage:** Rabbit IgG in phosphate buffered saline, pH 7.4, 150mM NaCl, 0.02% sodium azide and 50% glycerol. Store at -20 °C. Stable for 12 months from date of receipt.

**Purification:** The antiserum was purified by peptide affinity chromatography using SulfoLink™ Coupling Resin (Thermo Fisher Scientific).

**Immunogen:** A synthesized peptide derived from human PRLHR, corresponding to a region within the internal amino acids.

**Uniprot:** P49683

**Description:** Receptor for prolactin-releasing peptide (PrRP). Implicated in lactation, regulation of food intake and pain-signal processing.



Western blot analysis of extracts from HepG2, using PRLHR Ab. The lane on the left was treated with blocking peptide.

**IMPORTANT:** For western blot, incubate membrane with diluted primary Ab in 5% w/v milk, 1X TBS, 0.1% Tween@20 at 4°C with gentle shaking, overnight.

For Research Use Only. Not for use in diagnostic and therapeutic procedures. Not for resale without express authorization.