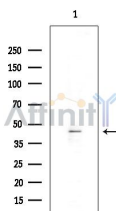


GPR120 Ab

[References\(5\)](#) [Images\(5\)](#)

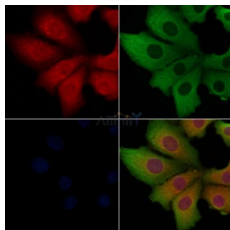
Cat.#: AF5219	Concn.: ~1mg/ml	Mol.Wt.: 42 kDa
Size:	Source: Rabbit	Clonality: Polyclonal

Application:	WB 1:500-1:2000, IF/ICC 1:100-1:500 *The optimal dilutions should be determined by the end user.
Reactivity:	Human,Mouse,Rat
Storage:	Rabbit IgG in phosphate buffered saline , pH 7.4, 150mM NaCl, 0.02% sodium azide and 50% glycerol. Store at -20 °C. Stable for 12 months from date of receipt.
Purification:	The antiserum was purified by peptide affinity chromatography using SulfoLink™ Coupling Resin (Thermo Fisher Scientific).
Immunogen:	A synthesized peptide derived from human GPR120, corresponding to a region within the internal amino acids.
Uniprot:	Q5NUL3
Description:	GPR120, a member of the rhodopsin family of G protein-coupled receptors (GPCRs), is a 377 amino acid protein which is expressed in the intestine. GPR120 is a receptor for unsaturated long-chain FFAs (free fatty acids). FFAs act as signaling molecules and are an important energy source



Western blot analysis of extracts from Rat brain, using GPR120 Ab at 1/1000 dilution.

Observed bands:45kD.



AF5219 staining HeLa cells by IF/ICC. The samples were fixed with PFA and permeabilized in 0.1% Triton X-100, then blocked in 10% serum for 45 minutes at 25°C. Samples were then incubated with primary Ab(#AF5219) and mouse anti-beta tubulin Ab(#T0023) for 1 hour at 37°C. An AlexaFluor594 conjugated goat anti-rabbit IgG Ab(Red) and an AlexaFluor488 conjugated goat anti-mouse IgG Ab(Green) were used as the secondary Ab.

The nuclear counter stain is DAPI (blue).

IMPORTANT: For western blot, incubate membrane with diluted primary Ab in 5% w/v milk , 1X TBS, 0.1% Tween@20 at 4°C with gentle shaking, overnight.



Affinity Biosciences

website: www.affbiotech.com

order: order@affbiotech.com

For Research Use Only. Not for use in diagnostic and therapeutic procedures. Not for resale without express authorization.