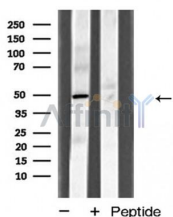


I-TRAF Ab

[Images\(1\)](#)

Cat.#: AF5299	Concn.: ~1mg/ml	Mol.Wt.: 47 kDa
Size:	Source: Rabbit	Clonality: Polyclonal
Application:	WB 1:500-1:2000, IF/ICC 1:100-1:500 *The optimal dilutions should be determined by the end user.	
Reactivity:	Human, Mouse, Rat	
Storage:	Rabbit IgG in phosphate buffered saline, pH 7.4, 150mM NaCl, 0.02% sodium azide and 50% glycerol. Store at -20 °C. Stable for 12 months from date of receipt.	
Purification:	The antiserum was purified by peptide affinity chromatography using SulfoLink™ Coupling Resin (Thermo Fisher Scientific).	
Immunogen:	A synthesized peptide derived from human I-TRAF, corresponding to a region within the internal amino acids.	
Uniprot:	Q92844	
Description:	Acts as a regulator of TRAF function by maintaining them in a latent state. Overexpression inhibits TRAF2-mediated NF-kappa-B activation signaled by CD40, TNFR1 and TNFR2. Blocks TRAF2 binding to LMP1 and inhibits LMP1-mediated NF-kappa-B activation. May be involved in I-kappa-B-kinase (IKK) regulation; may function as an adapter for kinases such as TBK1 or IKKε that can modulate IKK activity.	



Western blot analysis of I-TRAF expression in HT-29 cells

IMPORTANT: For western blot, incubate membrane with diluted primary Ab in 5% w/v milk, 1X TBS, 0.1% Tween@20 at 4°C with gentle shaking, overnight.

For Research Use Only. Not for use in diagnostic and therapeutic procedures. Not for resale without express authorization.