

GPR91 Ab

[References\(1\)](#) [Images\(4\)](#)

Cat.#: AF5316	Concn.: ~1mg/ml	Mol.Wt.: 38 kDa
Size:	Source: Rabbit	Clonality: Polyclonal

Application: WB 1:500-1:2000, IF/ICC 1:100-1:500
*The optimal dilutions should be determined by the end user.

Reactivity: Human,Mouse,Rat

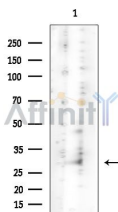
Storage: Rabbit IgG in phosphate buffered saline , pH 7.4, 150mM NaCl, 0.02% sodium azide and 50% glycerol. Store at -20 °C. Stable for 12 months from date of receipt.

Purification: The antiserum was purified by peptide affinity chromatography using SulfoLink™ Coupling Resin (Thermo Fisher Scientific).

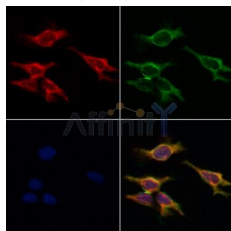
Immunogen: A synthesized peptide derived from human GPR91, corresponding to a region within the internal amino acids.

Uniprot: Q9BXA5

Description: FunctionReceptor for succinate.Tissue specificityExpressed specifically in kidney.Sequence similaritiesBelongs to the G-protein coupled receptor 1 family.



Western blot analysis of extracts from COLO205 cells(heat-shock treatment), using GPR91 Ab at 1/1000 dilution.
Observed bands:30kD.



AF5316 staining HepG2 by IF/ICC. The samples were fixed with PFA and permeabilized in 0.1% Triton X-100, then blocked in 10% serum for 45 minutes at 25°C. Samples were then incubated with primary Ab(AF5316 1:200) and mouse anti-beta tubulin Ab(T0023 1:200) for 1 hour at 37°C. An AlexaFluor594 conjugated goat anti-rabbit IgG(H+L) Ab(Red) and an AlexaFluor488 conjugated goat anti-mouse IgG(H+L) Ab(Green) were used as the secondary Ab.
The nuclear counter stain is DAPI(blue).

IMPORTANT: For western blot, incubate membrane with diluted primary Ab in 5% w/v milk , 1X TBS, 0.1% Tween@20 at 4°C with gentle shaking, overnight.



Affinity Biosciences

website: www.affbiotech.com

order: order@affbiotech.com

For Research Use Only. Not for use in diagnostic and therapeutic procedures. Not for resale without express authorization.