

MTA1 Ab

[Images\(1\)](#)

Cat.#: AF5318	Concn.: ~1mg/ml	Mol.Wt.: 73 kd
Size:	Source: Rabbit	Clonality: Polyclonal

Application: WB 1:500-1:2000, IF/ICC 1:100-1:500
*The optimal dilutions should be determined by the end user.

Reactivity: Human, Mouse, Rat

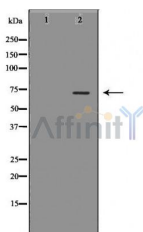
Storage: Rabbit IgG in phosphate buffered saline, pH 7.4, 150mM NaCl, 0.02% sodium azide and 50% glycerol. Store at -20 °C. Stable for 12 months from date of receipt.

Purification: The antiserum was purified by peptide affinity chromatography using SulfoLink™ Coupling Resin (Thermo Fisher Scientific).

Immunogen: A synthesized peptide derived from human MTA1, corresponding to a region within the internal amino acids.

Uniprot: Q13330

Description: May be involved in the regulation of gene expression by covalent modification of histone proteins. Isoform Long is a corepressor of estrogen receptor (ER). Isoform Short binds to ER and sequesters it in the cytoplasm and enhances non-genomic responses of ER.



Western blot analysis of MTA1 expression in HuvEc cells. The lane on the left was treated with the antigen-specific peptide.

IMPORTANT: For western blot, incubate membrane with diluted primary Ab in 5% w/v milk, 1X TBS, 0.1% Tween@20 at 4°C with gentle shaking, overnight.

For Research Use Only. Not for use in diagnostic and therapeutic procedures. Not for resale without express authorization.