

Fas Ligand Ab

[References\(2\)](#) [Images\(8\)](#)

Cat.#: AF5333	Concn.: ~1mg/ml	Mol.Wt.: 31 kDa
Size:	Source: Rabbit	Clonality: Polyclonal

Application: WB 1:500-1:2000, IHC 1:50-1:200
*The optimal dilutions should be determined by the end user.

Reactivity: Human, Mouse, Rat

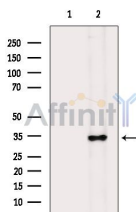
Storage: Rabbit IgG in phosphate buffered saline, pH 7.4, 150mM NaCl, 0.02% sodium azide and 50% glycerol. Store at -20 °C. Stable for 12 months from date of receipt.

Purification: The antiserum was purified by peptide affinity chromatography using SulfoLink™ Coupling Resin (Thermo Fisher Scientific).

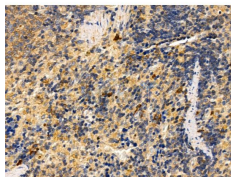
Immunogen: A synthesized peptide derived from human Fas Ligand, corresponding to a region within the internal amino acids.

Uniprot: P48023

Description: Cytokine that binds to TNFRSF6/FAS, a receptor that transduces the apoptotic signal into cells. May be involved in cytotoxic T-cell mediated apoptosis and in T-cell development. TNFRSF6/FAS-mediated apoptosis may have a role in the induction of peripheral tolerance,



Western blot analysis of extracts from Rat spleen, using Fas Ligand Ab. The lane on the left was treated with blocking peptide.



AF5333 at 1/100 staining Rat spleen tissue by IHC-P. The sample was formaldehyde fixed and a heat mediated antigen retrieval step in citrate buffer was performed. The sample was then blocked and incubated with the primary Ab at 4°C overnight. An HRP conjugated anti-Rabbit Ab was used as the secondary Ab.

IMPORTANT: For western blot, incubate membrane with diluted primary Ab in 5% w/v milk, 1X TBS, 0.1% Tween@20 at 4°C with gentle shaking, overnight.



Affinity Biosciences

website: www.affbiotech.com

order: order@affbiotech.com

For Research Use Only. Not for use in diagnostic and therapeutic procedures. Not for resale without express authorization.