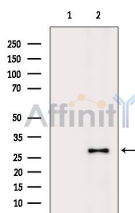


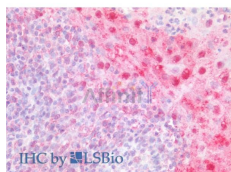
## CD40 Ab

[References\(7\)](#) [Images\(5\)](#)

|               |   |                       |
|---------------|---|-----------------------|
| Cat.#: AF5336 | Concn.: ~1mg/ml   | Mol.Wt.: 31 kDa       |
| Size:         | Source: Rabbit  | Clonality: Polyclonal |
| Application:  | WB 1:500-1:2000, IHC 1:50-1:200, IF/ICC 1:100-1:500<br>*The optimal dilutions should be determined by the end user.   |                       |
| Reactivity:   | Human, Mouse, Rat   |                       |
| Storage:      | Rabbit IgG in phosphate buffered saline, pH 7.4, 150mM NaCl, 0.02% sodium azide and 50% glycerol. Store at -20 °C. Stable for 12 months from date of receipt.   |                       |
| Purification: | The antiserum was purified by peptide affinity chromatography using SulfoLink™ Coupling Resin (Thermo Fisher Scientific).   |                       |
| Immunogen:    | A synthesized peptide derived from human CD40, corresponding to a region within C-terminal amino acids.   |                       |
| Uniprot:      | P25942  |                       |
| Description:  | Defects in CD40 are the cause of hyper-IgM immunodeficiency syndrome type 3 (HIGM3) [MIM:606843]; also known as hyper-IgM syndrome 3. HIGM3 is an autosomal recessive disorder which includes an inability of B cells to undergo isotype switching, one of the final differentiation steps in the humoral immune system, an inability to mount an antibody-specific immune response, and a lack of germinal center formation. |                       |



Western blot analysis of extracts from Rat liver, using CD40 Ab. The lane on the left was treated with blocking peptide.



AF5336 at 1/100 staining Human Tonsil tissue by IHC-P. The sample was formaldehyde fixed and a heat mediated antigen retrieval step in citrate buffer was performed. The sample was then blocked and incubated with the primary Ab at 4°C overnight. An HRP conjugated anti-Rabbit Ab was used as the secondary Ab.

**IMPORTANT:** For western blot, incubate membrane with diluted primary Ab

---

in 5% w/v milk , 1X TBS, 0.1% Tween@20 at 4°C with gentle shaking,  
overnight.

---

For Research Use Only. Not for use in diagnostic and therapeutic  
procedures. Not for resale without express authorization.