

c-Fos Ab

[References\(19\)](#) [Images\(18\)](#)

Cat.#: AF5354
Size:

Concn.: ~1mg/ml
Source: Rabbit

Mol.Wt.: 35~55kD
Clonality: Polyclonal

Application:

WB 1:500-1:2000, IHC 1:50-1:200, IP, IF/ICC 1:100-1:500

*The optimal dilutions should be determined by the end user.

Reactivity:

Human,Mouse,Rat

Storage:

Rabbit IgG in phosphate buffered saline , pH 7.4, 150mM NaCl, 0.02% sodium azide and 50% glycerol. Store at -20 °C. Stable for 12 months from date of receipt.

Purification:

The antiserum was purified by peptide affinity chromatography using SulfoLink™ Coupling Resin (Thermo Fisher Scientific).

Immunogen:

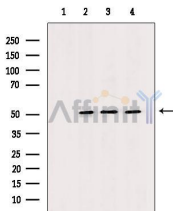
A synthesized peptide derived from human c-Fos, corresponding to a region within N-terminal amino acids.

Uniprot:

P01100

Description:

Nuclear phosphoprotein which forms a tight but non-covalently linked complex with the JUN/AP-1 transcription factor. In the heterodimer, FOS and JUN/AP-1 basic regions each seems to interact with symmetrical DNA half sites.



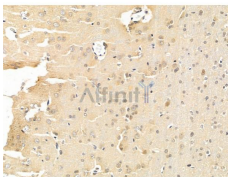
Western blot analysis of extracts from various samples, using Fos Ab.

Lane 1: A2780 cells lysates treated with blocking peptide;

Lane 2: A2780 cells;

Lane 3: MDA-MB-231 cells;

Lane 4: RAW264.7 cells.



AF5354 at 1/100 staining Rat brain tissue by IHC-P. The sample was formaldehyde fixed and a heat mediated antigen retrieval step in citrate buffer was performed. The sample was then blocked and incubated with the primary Ab at 4°C overnight. An HRP conjugated anti-Rabbit Ab was used as the secondary Ab.

IMPORTANT: For western blot, incubate membrane with diluted primary Ab in 5% w/v milk , 1X TBS, 0.1% Tween@20 at 4°C with gentle shaking, overnight.



Affinity Biosciences

website: www.affbiotech.com

order: order@affbiotech.com

For Research Use Only. Not for use in diagnostic and therapeutic procedures. Not for resale without express authorization.