

## Hsp90 alpha Ab

[References\(6\)](#) [Images\(18\)](#)

Cat.#: AF5368                      Concn.: ~1mg/ml                      Mol.Wt.: 83 kDa  
Size:                                      Source: Rabbit                              Clonality: Polyclonal

**Application:**                      WB 1:500-1:2000, IHC 1:50-1:200, IF/ICC 1:100-1:500  
\*The optimal dilutions should be determined by the end user.

**Reactivity:**                        Human,Mouse,Rat

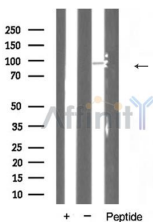
**Storage:**                            Rabbit IgG in phosphate buffered saline , pH 7.4, 150mM NaCl, 0.02% sodium azide and 50% glycerol. Store at -20 °C. Stable for 12 months from date of receipt.

**Purification:**                      The antiserum was purified by peptide affinity chromatography using SulfoLink™ Coupling Resin (Thermo Fisher Scientific).

**Immunogen:**                        A synthesized peptide derived from human Hsp90 alpha, corresponding to a region within C-terminal amino acids.

**Uniprot:**                              P07900

**Description:**                        FunctionMolecular chaperone. Has ATPase activity.Sequence similaritiesBelongs to the heat shock protein 90 family.Post-translational modificationsISGylated.



Western blot analysis of HSP90A expression in NIH/3T3 cells



AF5368 at 1/100 staining Rat brain tissue by IHC-P. The sample was formaldehyde fixed and a heat mediated antigen retrieval step in citrate buffer was performed. The sample was then blocked and incubated with the primary Ab at 4°C overnight. An HRP conjugated anti-Rabbit Ab was used as the secondary Ab.

**IMPORTANT:** For western blot, incubate membrane with diluted primary Ab in 5% w/v milk , 1X TBS, 0.1% Tween@20 at 4°C with gentle shaking, overnight.



**Affinity Biosciences**

website: [www.affbiotech.com](http://www.affbiotech.com)

order: [order@affbiotech.com](mailto:order@affbiotech.com)

---

For Research Use Only. Not for use in diagnostic and therapeutic procedures. Not for resale without express authorization.