

SOCS1 Ab

[References\(7\)](#) [Images\(3\)](#)

Cat.#: AF5378 Concn.: ~1mg/ml Mol.Wt.: 25~35 kD
Size: Source: Rabbit Clonality: Polyclonal

Application: WB 1:500-1:2000, IHC 1:50-1:200
*The optimal dilutions should be determined by the end user.

Reactivity: Human,Mouse,Rat

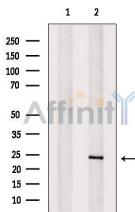
Storage: Rabbit IgG in phosphate buffered saline , pH 7.4, 150mM NaCl, 0.02% sodium azide and 50% glycerol. Store at -20 °C. Stable for 12 months from date of receipt.

Purification: The antiserum was purified by peptide affinity chromatography using SulfoLink™ Coupling Resin (Thermo Fisher Scientific).

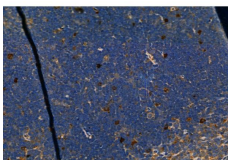
Immunogen: A synthesized peptide derived from human SOCS1, corresponding to a region within the internal amino acids.

Uniprot: O15524

Description: The SOCS (suppressor of cytokine signaling) gene family consists of a group of proteins that negatively regulate cytokine signal transduction. The SOCS family proteins contain a central SH2 domain and a carboxy-terminal region termed the “SOCS box.”



Western blot analysis of SOCS-1 expression in Mouse muscle tissue lysate. The lane on the left was treated with the antigen-specific peptide.



AF5378 at 1/100 staining Mouse spleen tissue by IHC-P. The sample was formaldehyde fixed and a heat mediated antigen retrieval step in citrate buffer was performed. The sample was then blocked and incubated with the primary Ab at 4°C overnight. An HRP conjugated anti-Rabbit Ab was used as the secondary Ab.

IMPORTANT: For western blot, incubate membrane with diluted primary Ab in 5% w/v milk , 1X TBS, 0.1% Tween@20 at 4°C with gentle shaking, overnight.



Affinity Biosciences

website: www.affbiotech.com

order: order@affbiotech.com

For Research Use Only. Not for use in diagnostic and therapeutic procedures. Not for resale without express authorization.