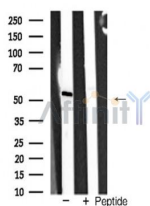


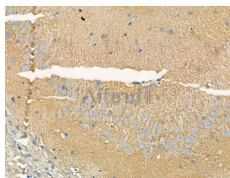
TRAF2 Ab

[References\(5\)](#) [Images\(2\)](#)

Cat.#: AF5382	Concn.: ~1mg/ml	Mol.Wt.: 56 kDa
Size:	Source: Rabbit	Clonality: Polyclonal
Application:	WB 1:500-1:2000, IF/ICC 1:100-1:500, IHC 1:50-1:200 *The optimal dilutions should be determined by the end user.	
Reactivity:	Human,Mouse,Rat	
Storage:	Rabbit IgG in phosphate buffered saline , pH 7.4, 150mM NaCl, 0.02% sodium azide and 50% glycerol. Store at -20 °C. Stable for 12 months from date of receipt.	
Purification:	The antiserum was purified by peptide affinity chromatography using SulfoLink™ Coupling Resin (Thermo Fisher Scientific).	
Immunogen:	A synthesized peptide derived from human TRAF2, corresponding to a region within C-terminal amino acids.	
Uniprot:	Q12933	
Description:	Tumor necrosis factor (TNF)-activated cell signaling is mediated primarily through the TNF receptor 1 (TNF-R1) and, to a lesser extent, TNF-R2. Both TNF receptors are members of the expanding TNF receptor superfamily, which includes the FAS antigen and CD40	



Western blot analysis of TRAF2 expression in PC12 cells



AF5382 at 1/100 staining Rat brain tissue by IHC-P. The sample was formaldehyde fixed and a heat mediated antigen retrieval step in citrate buffer was performed. The sample was then blocked and incubated with the primary Ab at 4°C overnight. An HRP conjugated anti-Rabbit Ab was used as the secondary Ab.

IMPORTANT: For western blot, incubate membrane with diluted primary Ab in 5% w/v milk , 1X TBS, 0.1% Tween@20 at 4°C with gentle shaking, overnight.



Affinity Biosciences

website: www.affbiotech.com

order: order@affbiotech.com

For Research Use Only. Not for use in diagnostic and therapeutic procedures. Not for resale without express authorization.