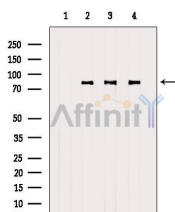


FOXP2 Ab

[References\(1\)](#) [Images\(2\)](#)

Cat.#: AF5385	Concn.: ~1mg/ml	Mol.Wt.: 79.9 kDa
Size:	Source: Rabbit	Clonality: Polyclonal
Application:	WB 1:500-1:2000 *The optimal dilutions should be determined by the end user.	
Reactivity:	Human, Mouse, Rat, Monkey	
Storage:	Rabbit IgG in phosphate buffered saline , pH 7.4, 150mM NaCl, 0.02% sodium azide and 50% glycerol. Store at -20 °C. Stable for 12 months from date of receipt.	
Purification:	The antiserum was purified by peptide affinity chromatography using SulfoLink™ Coupling Resin (Thermo Fisher Scientific).	
Immunogen:	A synthesized peptide derived from human FOXP2, corresponding to a region within C-terminal amino acids.	
Uniprot:	O15409	
Description:	Transcriptional repressor that may play a role in the specification and differentiation of lung epithelium. May also play a role in developing neural, gastrointestinal and cardiovascular tissues. Can act with CTBP1 to synergistically repress transcription but CTPBP1 is not essential. Involved in neural mechanisms mediating the development of speech and language.	



Western blot analysis of extracts from various samples, using FOXP2 Ab.

Lane 1: HeLa, treated with blocking peptide;

Lane 2: HeLa;

Lane 3: Mouse spleen;

Lane 4: COS-7.

IMPORTANT: For western blot, incubate membrane with diluted primary Ab in 5% w/v milk , 1X TBS, 0.1% Tween@20 at 4°C with gentle shaking, overnight.

For Research Use Only. Not for use in diagnostic and therapeutic procedures. Not for resale without express authorization.