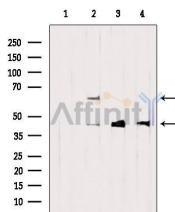


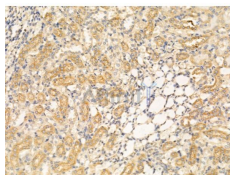
HNF1 beta Ab

[References\(2\)](#) [Images\(5\)](#)

Cat.#: AF5394	Concn.: ~1mg/ml	Mol.Wt.: 45kDa, 61kDa
Size:	Source: Rabbit	Clonality: Polyclonal
Application:	WB 1:500-1:2000, IF/ICC 1:100-1:500, IHC 1:50-1:200 *The optimal dilutions should be determined by the end user.	
Reactivity:	Human, Mouse, Rat	
Storage:	Rabbit IgG in phosphate buffered saline, pH 7.4, 150mM NaCl, 0.02% sodium azide and 50% glycerol. Store at -20 °C. Stable for 12 months from date of receipt.	
Purification:	The antiserum was purified by peptide affinity chromatography using SulfoLink™ Coupling Resin (Thermo Fisher Scientific).	
Immunogen:	A synthesized peptide derived from human HNF1 beta, corresponding to a region within the internal amino acids.	
Uniprot:	P35680	
Description:	Defects in HNF1B are the cause of renal cysts and diabetes syndrome (RCAD) [MIM:137920]; also called maturity-onset diabetes of the young type 5 (MODY5) or familial hypoplastic glomerulocystic kidney disease (GCKD). RCAD is an autosomal dominant disorder comprising non-diabetic renal disease resulting from abnormal renal development, and diabetes, which in some cases occurs earlier than age 25 years and is thus consistent with a diagnosis of maturity-onset diabetes of the young (MODY5).	



Western blot analysis of extracts from various samples, using HNF1 beta Ab.
Lane 1: B16F10 treated with blocking peptide;
Lane 2: B16F10;
Lane 3: Myeloma cells;
Lane 4: MCF7.



AF5394 at 1/100 staining Rat kidney tissue by IHC-P. The sample was formaldehyde fixed and a heat mediated antigen retrieval step in citrate buffer was performed. The sample was then blocked and incubated with the primary Ab at 4°C overnight. An HRP conjugated anti-Rabbit Ab was used as the secondary Ab.

IMPORTANT: For western blot, incubate membrane with diluted primary Ab in 5% w/v milk , 1X TBS, 0.1% Tween@20 at 4°C with gentle shaking, overnight.

For Research Use Only. Not for use in diagnostic and therapeutic procedures. Not for resale without express authorization.