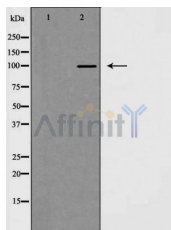


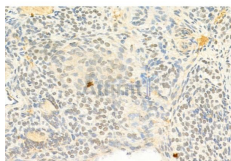
## PGC1 Ab

[References\(58\)](#) [Images\(33\)](#)

Cat.#: AF5395	Concn.: ~1mg/ml	Mol.Wt.: 90~140 kD
Size:	Source: Rabbit	Clonality: Polyclonal
Application:	WB 1:500-1:2000, IHC 1:50-1:200 *The optimal dilutions should be determined by the end user.	
Reactivity:	Human, Mouse, Rat	
Storage:	Rabbit IgG in phosphate buffered saline, pH 7.4, 150mM NaCl, 0.02% sodium azide and 50% glycerol. Store at -20 °C. Stable for 12 months from date of receipt.	
Purification:	The antiserum was purified by peptide affinity chromatography using SulfoLink™ Coupling Resin (Thermo Fisher Scientific).	
Immunogen:	A synthesized peptide derived from human PGC1 alpha, corresponding to a region within the internal amino acids.	
Uniprot:	Q9UBK2	
Description:	Transcriptional coactivator for steroid receptors and nuclear receptors. Greatly increases the transcriptional activity of PPARG and thyroid hormone receptor on the uncoupling protein promoter. Can regulate key mitochondrial genes that contribute to the program of adaptive thermogenesis.	



Western blot analysis of PGC1 alpha expression in Human Skeletal Muscle Lysate. The lane on the left was treated with the antigen-specific peptide.



AF5395 at 1/100 staining Rat ovary tissue by IHC-P. The sample was formaldehyde fixed and a heat mediated antigen retrieval step in citrate buffer was performed. The sample was then blocked and incubated with the primary Ab at 4°C overnight. An HRP conjugated anti-Rabbit Ab was used as the secondary Ab.

**IMPORTANT:** For western blot, incubate membrane with diluted primary Ab in 5% w/v milk, 1X TBS, 0.1% Tween@20 at 4°C with gentle shaking,

---

overnight.

---

For Research Use Only. Not for use in diagnostic and therapeutic procedures. Not for resale without express authorization.