

## TEC Ab

[Images\(1\)](#)

Cat.#: BF0100	Concn.: ~1mg/ml	Mol.Wt.: 74kDa
Size:	Source: Mouse	Clonality: Monoclonal

Application:	ELISA 1:10000, WB 1:500-1:2000 *The optimal dilutions should be determined by the end user.
Reactivity:	Human
Storage:	Mouse IgG1 in phosphate buffered saline (without Mg <sup>2+</sup> and Ca <sup>2+</sup> ), pH 7.4, 150mM NaCl, 0.02% sodium azide and 50% glycerol. Store at -20 °C. Stable for 12 months from date of receipt.
Purification:	Affinity-chromatography.
Immunogen:	Purified recombinant fragment of human TEC expressed in E. Coli.
Uniprot:	P42680
Description:	TEC, it belongs to the Tec family of non-receptor protein-tyrosine kinases containing a pleckstrin homology domain. Tec family kinases are involved in the intracellular signaling mechanisms of cytokine receptors, lymphocyte surface antigens, heterotrimeric G-protein coupled receptors, and integrin molecules. They are also key players in the regulation of the immune functions. Tec kinase is an integral component of T cell signaling and has a distinct role in T cell activation. This gene may be associated with myelodysplastic syndrome.

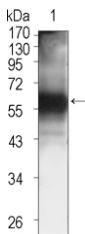


Figure 1: Western blot analysis using TEC mouse mAb against TEC (aa90-240)-hIgGFc transfected HEK293 cell lysates (1).

**IMPORTANT:** For western blot, incubate membrane with diluted primary Ab in 5% w/v milk , 1X TBS, 0.1% Tween@20 at 4°C with gentle shaking, overnight.

For Research Use Only. Not for use in diagnostic and therapeutic procedures. Not for resale without express authorization.