

## Phospho-ATRIP (Ser224) Ab

[Images\(2\)](#)

Cat.#: AF5437  
Size:

Concn.: ~1mg/ml  
Source: Rabbit

Mol.Wt.: 85 kDa  
Clonality: Polyclonal

Application:

WB 1:500-1:2000, IHC 1:50-1:200  
\*The optimal dilutions should be determined by the end user.

Reactivity:

Human, Mouse, Rat

Storage:

Rabbit IgG in phosphate buffered saline, pH 7.4, 150mM NaCl, 0.02% sodium azide and 50% glycerol. Store at -20 °C. Stable for 12 months from date of receipt.

Purification:

The Ab is from purified rabbit serum by affinity purification via sequential chromatography on phospho-peptide and non-phospho-peptide affinity columns.

Immunogen:

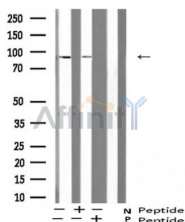
A synthesized peptide derived from human ATRIP around the phosphorylation site of Ser224.

Uniprot:

Q8WXE1

Description:

Required for checkpoint signaling after DNA damage. Required for ATR expression, possibly by stabilizing the protein.



Western blot analysis of ATRIP (Phospho-Ser224) expression in Human mammary cell lysate

**IMPORTANT:** For western blot, incubate membrane with diluted primary Ab in 5% w/v milk, 1X TBS, 0.1% Tween@20 at 4°C with gentle shaking, overnight.

For Research Use Only. Not for use in diagnostic and therapeutic procedures. Not for resale without express authorization.