

## OR51E2 Ab

[Images\(3\)](#)

Cat.#: AF5448	Concn.: ~1mg/ml	Mol.Wt.: 35 kDa
Size:	Source: Rabbit	Clonality: Polyclonal

Application: WB 1:500-1:2000,, IF/ICC 1:100-1:500

\*The optimal dilutions should be determined by the end user.

Reactivity: Human,Rat

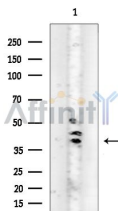
Storage: Rabbit IgG in phosphate buffered saline , pH 7.4, 150mM NaCl, 0.02% sodium azide and 50% glycerol. Store at -20 °C. Stable for 12 months from date of receipt.

Purification: The antiserum was purified by peptide affinity chromatography using SulfoLink™ Coupling Resin (Thermo Fisher Scientific).

Immunogen: A synthesized peptide derived from human OR51E2, corresponding to a region within the internal amino acids.

Uniprot: Q9H255

Description: FunctionOdorant receptor.Tissue specificityExclusively expressed in the prostate. Up-regulated in prostate cancers.Sequence similaritiesBelongs to the G-protein coupled receptor 1 family.



Western blot analysis of extracts from Rat brain, using OR51E2 Ab at 1/1000 dilution.

Observed bands:75kD.

**IMPORTANT:** For western blot, incubate membrane with diluted primary Ab in 5% w/v milk , 1X TBS, 0.1% Tween@20 at 4°C with gentle shaking, overnight.

For Research Use Only. Not for use in diagnostic and therapeutic procedures. Not for resale without express authorization.