

## Caspase 10 Ab

[Images\(1\)](#)

Cat.#: DF6021	Concn.: ~1mg/ml	Mol.Wt.: 59kDa
Size:	Source: Rabbit	Clonality: Polyclonal

**Application:** WB 1:500-1:2000, IHC 1:50-1:200  
\*The optimal dilutions should be determined by the end user.

**Reactivity:** Human, Mouse, Rat

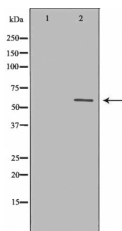
**Storage:** Rabbit IgG in phosphate buffered saline, pH 7.4, 150mM NaCl, 0.02% sodium azide and 50% glycerol. Store at -20 °C. Stable for 12 months from date of receipt.

**Purification:** The antiserum was purified by peptide affinity chromatography using SulfoLink™ Coupling Resin (Thermo Fisher Scientific).

**Immunogen:** A synthesized peptide derived from human Caspase 10, corresponding to a region within C-terminal amino acids.

**Uniprot:** Q92851

**Description:** Caspase-10 is a DED (death effector domain)-containing caspase and functions as an initiator caspase in Fas/TNF induced apoptosis. Four isoforms of caspase-10 have been identified: caspase-10a (Mch4), caspase-10b (FLICE2), caspase-10c and caspase-10d. They have the same prodomain but different mature large and small subdomains (2-4). Upon death ligand-receptor binding, caspase-10 is coupled to the multimeric Fas/TNF receptor complex via DED/FADD adaptor interaction (1-4). This complex processes procaspase-10 into a large active fragment and a small fragment. Cleaved caspase-10 further processes other caspase members, including caspase-3 and caspase-7, to initiate a caspase cascade, leading to apoptosis (3-6).



Western blot analysis of extracts from Jurkat using CASP10 Ab. The lane on the left was treated with the antigen-specific peptide.

**IMPORTANT:** For western blot, incubate membrane with diluted primary Ab in 5% w/v milk, 1X TBS, 0.1% Tween@20 at 4°C with gentle shaking, overnight.

---

procedures. Not for resale without express authorization.