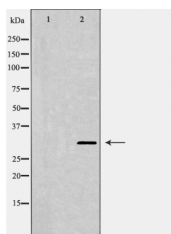


CD40 Ab

[Images\(1\)](#)

Cat.#: DF6022	Concn.: ~1mg/ml	Mol.Wt.: 31kDa
Size:	Source: Rabbit	Clonality: Polyclonal
Application:	WB 1:500-1:2000, IF/ICC 1:100-1:500 *The optimal dilutions should be determined by the end user.	
Reactivity:	Human, Mouse, Rat	
Storage:	Rabbit IgG in phosphate buffered saline, pH 7.4, 150mM NaCl, 0.02% sodium azide and 50% glycerol. Store at -20 °C. Stable for 12 months from date of receipt.	
Purification:	The antiserum was purified by peptide affinity chromatography using SulfoLink™ Coupling Resin (Thermo Fisher Scientific).	
Immunogen:	A synthesized peptide derived from human CD40, corresponding to a region within C-terminal amino acids.	
Uniprot:	P25942	
Description:	CD40 Ligand (CD40L), a member of the TNF superfamily of ligands, is expressed as either a membrane-bound or soluble homotrimer. Both membrane-bound and soluble forms of CD40L have biological activity (1,2). CD40L is expressed primarily on activated T cells; however, mast cells, basophils, and NK cells may also express CD40L. CD40L functions as an important T cell co-stimulatory molecule and enhances T-dependent B cell responses (1,2). CD40L binds CD40, which is a receptor expressed on B cells, dendritic cells, and macrophages. Binding of CD40L to CD40 leads to the recruitment of TRAF proteins (TRAFs 2,3,5, and 6) resulting in the activation of the JNK and NF- κ B pathways (1,2).	



Western blot analysis of extracts from mouse eyes, using CD40 Ab. The lane on the left was treated with the antigen-specific peptide.

IMPORTANT: For western blot, incubate membrane with diluted primary Ab in 5% w/v milk, 1X TBS, 0.1% Tween@20 at 4°C with gentle shaking, overnight.