

## DOK4 Ab

[Images\(1\)](#)

Cat.#: DF6029	Concn.: ~1mg/ml	Mol.Wt.: 37kDa
Size:	Source: Rabbit	Clonality: Polyclonal

Application: WB 1:500-1:2000, IHC 1:50-1:200, IF/ICC 1:100-1:500  
\*The optimal dilutions should be determined by the end user.

Reactivity: Human, Mouse, Rat

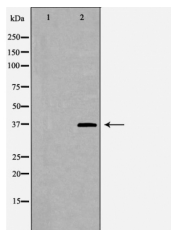
Storage: Rabbit IgG in phosphate buffered saline, pH 7.4, 150mM NaCl, 0.02% sodium azide and 50% glycerol. Store at -20 °C. Stable for 12 months from date of receipt.

Purification: The antiserum was purified by peptide affinity chromatography using SulfoLink™ Coupling Resin (Thermo Fisher Scientific).

Immunogen: A synthesized peptide derived from human DOK4, corresponding to a region within N-terminal amino acids.

Uniprot: Q8TEW6

Description: The downstream of kinase family (Dok-1-7) are members of a class of docking proteins that interact with receptor tyrosine kinases and, via this interaction, mediate biological responses within the body. Dok-4 (Downstream of kinase-4) is a 326 amino acid protein that contains one PH domain and one IRS-type PTB domain and belongs to the Dok family of interacting proteins. Expressed in a variety of tissues with highest expression in liver, heart, kidney and skeletal muscle, Dok-4 plays an important role in Ret-mediated neurite outgrowth and may link Ret with downstream effectors during neuronal differentiation. Additionally, Dok-4 is thought to play a positive role in the activation of MAPK pathways and may participate in T-cell induced immune system regulation.



Western blot analysis of extracts from MCF7, using DOK4 Ab. The lane on the left was treated with the antigen-specific peptide.

**IMPORTANT:** For western blot, incubate membrane with diluted primary Ab in 5% w/v milk, 1X TBS, 0.1% Tween@20 at 4°C with gentle shaking, overnight.

---

procedures. Not for resale without express authorization.