

## PCNA Ab

[References\(2\)](#) [Images\(2\)](#)

Cat.#: DF6067	Concn.: ~1mg/ml	Mol.Wt.: 29/31kDa
Size:	Source: Rabbit	Clonality: Polyclonal

Application: WB 1:500-1:2000, IHC 1:50-1:200, IF/ICC 1:100-1:500  
\*The optimal dilutions should be determined by the end user.

Reactivity: Human, Mouse, Rat

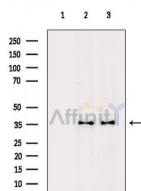
Storage: Rabbit IgG in phosphate buffered saline , pH 7.4, 150mM NaCl, 0.02% sodium azide and 50% glycerol. Store at -20 °C. Stable for 12 months from date of receipt.

Purification: The antiserum was purified by peptide affinity chromatography using SulfoLink™ Coupling Resin (Thermo Fisher Scientific).

Immunogen: A synthesized peptide derived from human PCNA, corresponding to a region within the internal amino acids.

Uniprot: P12004

Description: Proliferating cell nuclear antigen (PCNA) is a member of the DNA sliding clamp family of proteins that assist in DNA replication . Crystal structure data suggests that a PCNA homotrimer ring can encircle and slide along the DNA double helix . Multiple proteins involved in DNA replication, DNA repair, and cell cycle control bind to PCNA rather than directly associating with DNA, thus facilitating fast processing of DNA (reviewed in 3). PCNA protein expression is a well-accepted marker of proliferation and PCNA (PC10) Mouse mAb has been used to assess PCNA levels in hundreds of scientific studies.



Western blot analysis of extracts from various samples, using PCNA Ab.  
Lane 1: Raji cells (UV treatment), blocked with antigen-specific peptides,  
Lane 2: Raji cells (UV treatment),  
Lane 3: 293 cells (heat-shock treatment).

**IMPORTANT:** For western blot, incubate membrane with diluted primary Ab in 5% w/v milk , 1X TBS, 0.1% Tween@20 at 4°C with gentle shaking, overnight.

For Research Use Only. Not for use in diagnostic and therapeutic procedures. Not for resale without express authorization.