

IL17A Ab

[References\(32\)](#) [Images\(14\)](#)

Cat.#: DF6127
Size:

Concn.: ~1mg/ml
Source: Rabbit

Mol.Wt.: 18kDa
Clonality: Polyclonal

Application:

WB 1:200-1:1500, IHC 1:50-1:200, IF/ICC 1:20-1:50

*The optimal dilutions should be determined by the end user.

Reactivity:

Human, Mouse, Rat

Storage:

Rabbit IgG in phosphate buffered saline, pH 7.4, 150mM NaCl, 0.02% sodium azide and 50% glycerol. Store at -20 °C. Stable for 12 months from date of receipt.

Purification:

The antiserum was purified by peptide affinity chromatography using SulfoLink™ Coupling Resin (Thermo Fisher Scientific).

Immunogen:

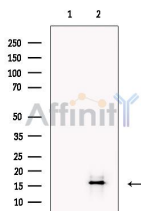
A synthesized peptide derived from human IL17A, corresponding to a region within the internal amino acids.

Uniprot:

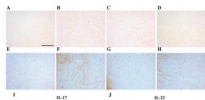
Q16552

Description:

IL-17A is a cysteine-linked homodimeric pro-inflammatory cytokine produced by Th17 cells, a distinct CD4+ T cell lineage (1,2). IL-17A stimulates the production of the pro-inflammatory cytokines IL-1?, TNF-?, and IL-6. IL-17A also induces production of the neutrophil chemoattractants IL-8, CXCL1, and CXCL6 thereby bridging adaptive and innate immunity (1,2). IL-17A is intimately involved in mucosal immunity against bacterial infections (1,3) and has a putative role in some autoimmune disorders (1,4). IL-17A effects appear to be exerted primarily through binding to the IL-17RA. IL-17A binding induces production of cytokines, chemokines and other proteins through activation of the Erk1/2 MAP kinase, PI3K/Akt, p38, and NF-?B pathways (3,4, 6).



Western blot analysis of extracts from Human thymus, using IL17A Ab. The lane on the left was treated with blocking peptide.



This image is a courtesy of anonymous review.

IMPORTANT: For western blot, incubate membrane with diluted primary Ab in 5% w/v milk , 1X TBS, 0.1% Tween@20 at 4°C with gentle shaking, overnight.

For Research Use Only. Not for use in diagnostic and therapeutic procedures. Not for resale without express authorization.