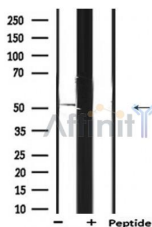


ANGPTL3 Ab

[Images\(1\)](#)

Cat.#: DF6128	Concn.: ~1mg/ml	Mol.Wt.: 54kDa
Size:	Source: Rabbit	Clonality: Polyclonal

Application:	WB 1:500-1:2000 *The optimal dilutions should be determined by the end user.
Reactivity:	Human, Mouse, Rat
Storage:	Rabbit IgG in phosphate buffered saline, pH 7.4, 150mM NaCl, 0.02% sodium azide and 50% glycerol. Store at -20 °C. Stable for 12 months from date of receipt.
Purification:	The antiserum was purified by peptide affinity chromatography using SulfoLink™ Coupling Resin (Thermo Fisher Scientific).
Immunogen:	A synthesized peptide derived from human ANGPTL3, corresponding to a region within N-terminal amino acids.
Uniprot:	Q9Y5C1
Description:	Angiopietin-like protein 3 (Angptl3) functions as a potent lipoprotein lipase inhibitor and is an important component of plasma triglyceride homeostasis. Angptl3 also plays a role in adipose formation and angiogenesis through its interaction with integrin (v)beta. It is secreted by the liver and is functionally defined by the C-terminal fibrinogen (FBN)-like domain and an N-terminal coiled-coil domain. Angptl3 regulates circulating triglyceride levels during different nutritional states thereby mediating the feeding/fasting cycle. A deficiency of Angptl3 results in abnormally low lipid levels, and a repression of the protein may be protective against atherosclerosis. Angptl3 may also play an important role in hyperlipidemia in diabetes.



Western blot analysis of extracts from Mouse liver, using ANGPTL3 Ab. The lane on the right was treated with blocking peptide.

IMPORTANT: For western blot, incubate membrane with diluted primary Ab in 5% w/v milk, 1X TBS, 0.1% Tween@20 at 4°C with gentle shaking, overnight.

procedures. Not for resale without express authorization.