

Parkin Ab

[Images\(2\)](#)

Cat.#: DF6150	Concn.: ~1mg/ml	Mol.Wt.: 52kDa
Size:	Source: Rabbit	Clonality: Polyclonal

Application: WB 1:500-1:2000, IHC 1:50-1:200
*The optimal dilutions should be determined by the end user.

Reactivity: Human, Mouse, Rat

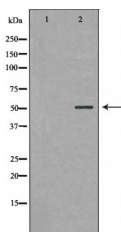
Storage: Rabbit IgG in phosphate buffered saline, pH 7.4, 150mM NaCl, 0.02% sodium azide and 50% glycerol. Store at -20 °C. Stable for 12 months from date of receipt.

Purification: The antiserum was purified by peptide affinity chromatography using SulfoLink™ Coupling Resin (Thermo Fisher Scientific).

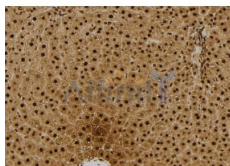
Immunogen: A synthesized peptide derived from human Parkin, corresponding to a region within the internal amino acids.

Uniprot: O60260

Description: Parkin is a protein of 465 amino acids with an amino-terminal ubiquitin domain and a carboxy-terminal RING-box. In the case of autosomal recessive juvenile Parkinsonism (AR-JP), deletions have been found in the gene on chromosome 6 encoding the protein Parkin.



Western blot analysis of PC12 using PARK2 Ab. The lane on the left was treated with the antigen-specific peptide.



DF6150 at 1/100 staining Rat liver tissue by IHC-P. The sample was formaldehyde fixed and a heat mediated antigen retrieval step in citrate buffer was performed. The sample was then blocked and incubated with the Ab for 1.5 hours at 22°C. An HRP conjugated goat anti-rabbit Ab was used as the secondary Ab.

IMPORTANT: For western blot, incubate membrane with diluted primary Ab in 5% w/v milk, 1X TBS, 0.1% Tween@20 at 4°C with gentle shaking, overnight.



Affinity Biosciences

website: www.affbiotech.com

order: order@affbiotech.com

For Research Use Only. Not for use in diagnostic and therapeutic procedures. Not for resale without express authorization.