

## ID2 Ab

[References\(1\)](#) [Images\(3\)](#)

Cat.#: DF6178  
Size:

Concn.: ~1mg/ml  
Source: Rabbit

Mol.Wt.: 18kDa  
Clonality: Polyclonal

Application:

WB 1:500-1:2000, IHC 1:50-1:200  
\*The optimal dilutions should be determined by the end user.

Reactivity:

Human,Mouse,Rat

Storage:

Rabbit IgG in phosphate buffered saline , pH 7.4, 150mM NaCl, 0.02% sodium azide and 50% glycerol. Store at -20 °C. Stable for 12 months from date of receipt.

Purification:

The antiserum was purified by peptide affinity chromatography using SulfoLink™ Coupling Resin (Thermo Fisher Scientific).

Immunogen:

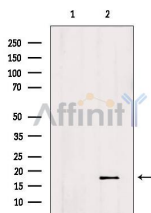
A synthesized peptide derived from human ID2, corresponding to a region within C-terminal amino acids.

Uniprot:

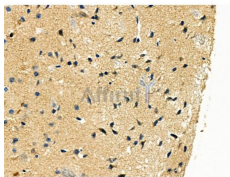
Q02363

Description:

Inhibitor of DNA-binding-2 (Id2) is a member of the Id proteins which belong to the helix-loop-helix (HLH) protein family. The Id protein functions by binding to specific transcription factors and preventing their dimerization and DNA binding (1-3). Id2 interacts with a wide variety of transcription factors including E proteins , TCS , Pax and the tumor suppressor Rb . Id2 has been shown to be important in regulating cellular differentiation, proliferation, development and tumorigenesis (7-9). In tumor cells, increased levels of Id2 functionally inactivate Rb, leading to cellular transformation and cancer (10,11). Id2 is therefore a promising therapeutic target for treatment of cancer .



Western blot analysis of extracts from HeLa, using ID2 Ab. Lane 1 was treated with the antigen-specific peptide.



DF6178 at 1/100 staining Mouse brain tissue by IHC-P. The sample was formaldehyde fixed and a heat mediated antigen retrieval step in citrate buffer was performed. The sample was then blocked and incubated with the primary Ab at 4°C overnight. An HRP conjugated anti-Rabbit Ab was used as the secondary Ab.

**IMPORTANT:** For western blot, incubate membrane with diluted primary Ab in 5% w/v milk , 1X TBS, 0.1% Tween@20 at 4°C with gentle shaking, overnight.

For Research Use Only. Not for use in diagnostic and therapeutic procedures. Not for resale without express authorization.