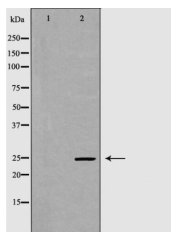


## GPX5 Ab

[Images\(1\)](#)

Cat.#: DF6220	Concn.: ~1mg/ml	Mol.Wt.: 25kDa
Size:	Source: Rabbit	Clonality: Polyclonal
Application:	WB 1:500-1:2000, IHC 1:50-1:200 *The optimal dilutions should be determined by the end user.	
Reactivity:	Human, Mouse, Rat	
Storage:	Rabbit IgG in phosphate buffered saline, pH 7.4, 150mM NaCl, 0.02% sodium azide and 50% glycerol. Store at -20 °C. Stable for 12 months from date of receipt.	
Purification:	The antiserum was purified by peptide affinity chromatography using SulfoLink™ Coupling Resin (Thermo Fisher Scientific).	
Immunogen:	A synthesized peptide derived from human GPX5, corresponding to a region within the internal amino acids.	
Uniprot:	O75715	
Description:	GPX5 belongs to the glutathione peroxidase family. GPX5 protects cells and enzymes from oxidative damage, by catalyzing the reduction of hydrogen peroxide, lipid peroxides and organic hydroperoxide, by glutathione. Catalytic reaction: $2 \text{ glutathione} + \text{H}_2\text{O}_2 = \text{glutathione disulfide} + 2 \text{H}_2\text{O}$ . GPX5 constitute a glutathione peroxidase-like protective system against peroxide damage in sperm membrane lipids.	



Western blot analysis of mouse testis lysates using GPX5 Ab. The lane on the left was treated with the antigen-specific peptide.

**IMPORTANT:** For western blot, incubate membrane with diluted primary Ab in 5% w/v milk, 1X TBS, 0.1% Tween@20 at 4°C with gentle shaking, overnight.

For Research Use Only. Not for use in diagnostic and therapeutic procedures. Not for resale without express authorization.