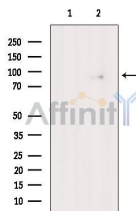


## CUL3 Ab

[References\(1\)](#) [Images\(2\)](#)

Cat.#: DF6223	Concn.: ~1mg/ml	Mol.Wt.: 89kDa
Size:	Source: Rabbit	Clonality: Polyclonal
Application:	WB 1:500-1:2000, IHC 1:50-1:200 *The optimal dilutions should be determined by the end user.	
Reactivity:	Human,Mouse,Rat	
Storage:	Rabbit IgG in phosphate buffered saline , pH 7.4, 150mM NaCl, 0.02% sodium azide and 50% glycerol. Store at -20 °C. Stable for 12 months from date of receipt.	
Purification:	The antiserum was purified by peptide affinity chromatography using SulfoLink™ Coupling Resin (Thermo Fisher Scientific).	
Immunogen:	A synthesized peptide derived from human CUL3, corresponding to a region within the internal amino acids.	
Uniprot:	Q13618	
Description:	CUL3 (Cullin-3) is a member of the cullin-based ubiquitin ligase family. By interacting with Hrt1 and BTB domain containing proteins, the complex functions as a CUL3-based E3 ligase to bring specific substrates to ubiquitinylation and degradation . The CUL3 complex has been shown to target many substrates involved in cell cycle progression , transcription , development and differentiation (4,5).	



Western blot analysis of extracts from Mouse heart, using CUL3 Ab. The lane on the left was treated with blocking peptide.

**IMPORTANT:** For western blot, incubate membrane with diluted primary Ab in 5% w/v milk , 1X TBS, 0.1% Tween@20 at 4°C with gentle shaking, overnight.

For Research Use Only. Not for use in diagnostic and therapeutic procedures. Not for resale without express authorization.